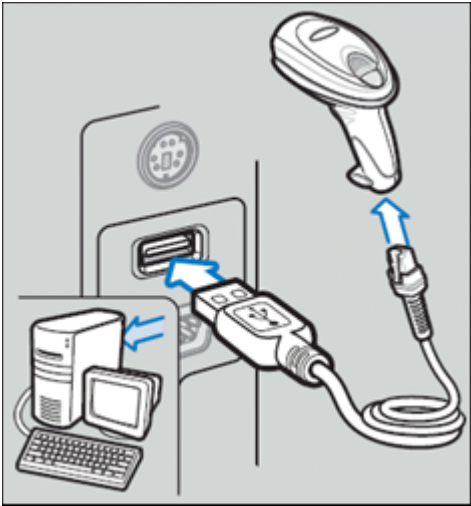


Configuring the Symbol DS6707 Bar Code Scanner for Use with the DPAS Warehouse Module

For the Symbol DS6707 Bar Code Scanner to work with the Warehouse module it must first be configured to scan properly. Complete the following steps to configure your scanner.

1. Plug the bar code scanner into the Universal Serial Bus (USB) port on your computer.



2. Once the scanner has initiated, scan the following barcodes:



Scan First – Set Defaults



Scan Options
Scan Second



<DATA> <SUFFIX>
Scan Third



Enter
Scan Fourth

Your scanner can now be used to scan the bar codes on Common Access Cards (CACs) and bar codes on the top of the various forms within the Warehouse module.

For additional information, you can download the [DS6707 Quick Start Guide \(P/N 72-83972-01 Rev C\)](http://tinyurl.com/k4ho8qd) at <http://tinyurl.com/k4ho8qd>